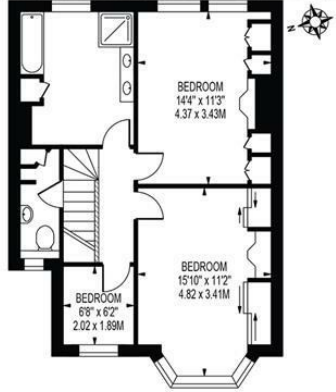


**Ethelbert Road
West Wimbledon, SW20 8QE**

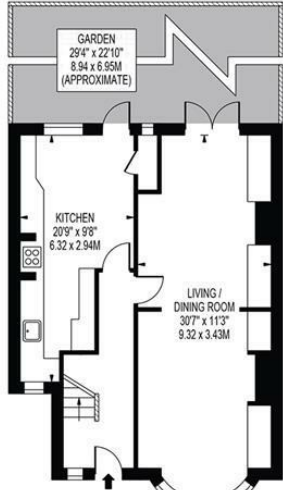
£900,000 Freehold



ETHELBERT ROAD
 APPROXIMATE GROSS INTERNAL FLOOR AREA: 1150 SQ FT - 106.83 SQ M



FIRST FLOOR



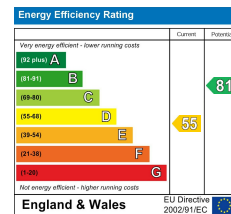
GROUND FLOOR

FOR ILLUSTRATION PURPOSES ONLY

THIS FLOOR PLAN SHOULD BE USED AS A GENERAL OUTLINE FOR GUIDANCE ONLY AND DOES NOT CONSTITUTE IN WHOLE OR IN PART AN OFFER OR CONTRACT. ANY INTENDING PURCHASER OR LESSEE SHOULD SATISFY THEMSELVES BY INSPECTION, SEARCHES, ENQUIRIES AND FULL SURVEY AS TO THE CORRECTNESS OF EACH STATEMENT. ANY AREAS, MEASUREMENTS OR DISTANCES QUOTED ARE APPROXIMATE AND SHOULD NOT BE USED TO VALUE A PROPERTY OR BE THE BASIS OF ANY SALE OR LET.



- Three Bedroom - Victorian End of Terrace House
- Excellent Potential to Extend S.T.P.P
- Well Maintained Throughout
- Easy Access to Raynes Park and Wimbledon
- Close to Well Regarded Schools
- Spacious Kitchen/Dining Room
- Large Through Lounge
- No Onward Chain
- EPC - D
- Council Tax Band - F



For Free Mortgage Quote and Best Mortgage Rates, call Ellisons Mortgage Advisor on 0208 944 9595



Although these particulars are believed to be correct, their accuracy is not guaranteed and they do not form part of any contract.

Celebrating 30 years of successful Sales and Lettings in Merton

